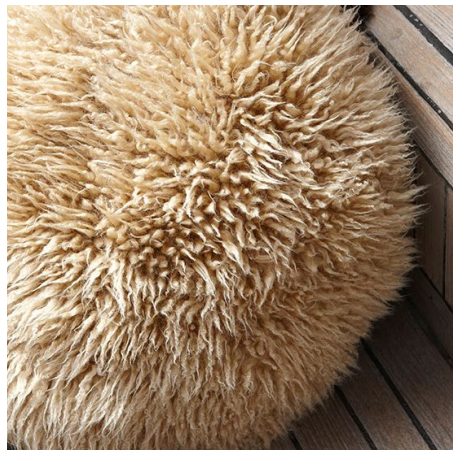


# Skandilock Longwool Curly

Art. no 1720017-



Our Skandilock Longwool Curly is made from lambskin from New Zealand. With its long wool and a wonderful tousled curliness it is well suited for interior products but can also be used for individual upholstery projects. The skin has a natural curliness but the structure of the wool can vary in curliness and colour tone.

Natural variations in colour shade and wool character are likely to occur. When dyeing the skins, differences in fiber thickness and overall density means that the skin's ability to absorb dye varies within the same color batch.

## Colours



-01  
Black

-08  
Honey

-25  
Natural

-26  
Grey

## Origin raw material

Nya Zeeland, Lamb/sheep

## Leather

**Thickness**

1-3 mm

## Wool

<b>Lenght</b>	+50 mm
<b>Charachter</b>	Curly

## Tanning process

<b>Natural</b>	Synthetic tanned, chrome-free
<b>Remaining colors</b>	Synthetic tanned/Crom III

## Washability

30 degrees Celsius. No bleaching/No ironing/No tumble drying.